

Electroless-Nickel Plating Plant CBA 1-455/001

For manufacturing high-precision diamond and CBN grinding pieces and similar tools, as well as for protective and decorative nickel plating and dispersion plating of electro-plated diamond tools.

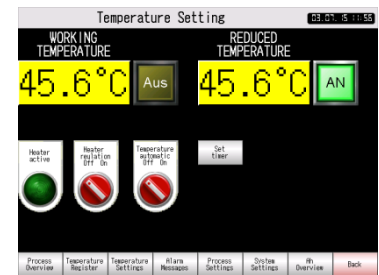
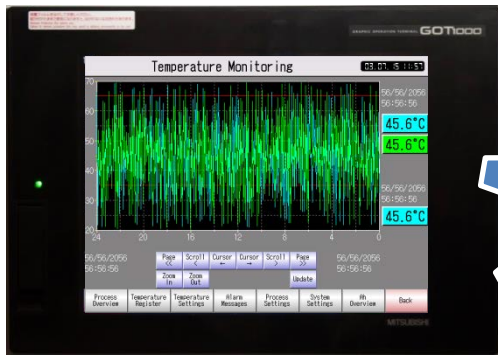


**Please note: All illustrations are examples.
The product may differ from the illustrations.**

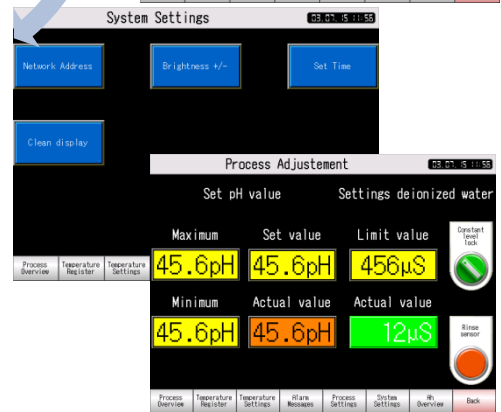
1. Process control and regulation unit (PRS)
 - Temperature
 - pH regulation
 - Nickel regulator
 - 4-stage timing
 - Bath level
 - Stabilisation of bath parameters
 - Starting and protection current
 - Anodic tank protection
2. Stainless steel plating tank
 - Heat insulated
 - Immersed centrifugal pump for bath circulation
 - Filter bag unit with replaceable filter element
 - Built-in bath heaters
 - Integrated rim exhaustion
3. Three-cascade standing sink unit (KSP)



Inside view of plating tank



- Touchscreen operator terminal of the PRS
- Process control
 - Setting, monitoring and constancy of bath parameters
 - Temperature register
 - Release of starting / protection current
 - Control of anodic tank protection
 - Pump control
 - System settings
 - Status report



Operation panel for anodic tank protection (Protectostat) Nickel regulator for monitoring and stabilization of plating bath



Inn view of PRS: Dosing pumps and reservoirs for regulation chemicals for plating bath



Filter bag unit and sensors for monitoring the plating bath