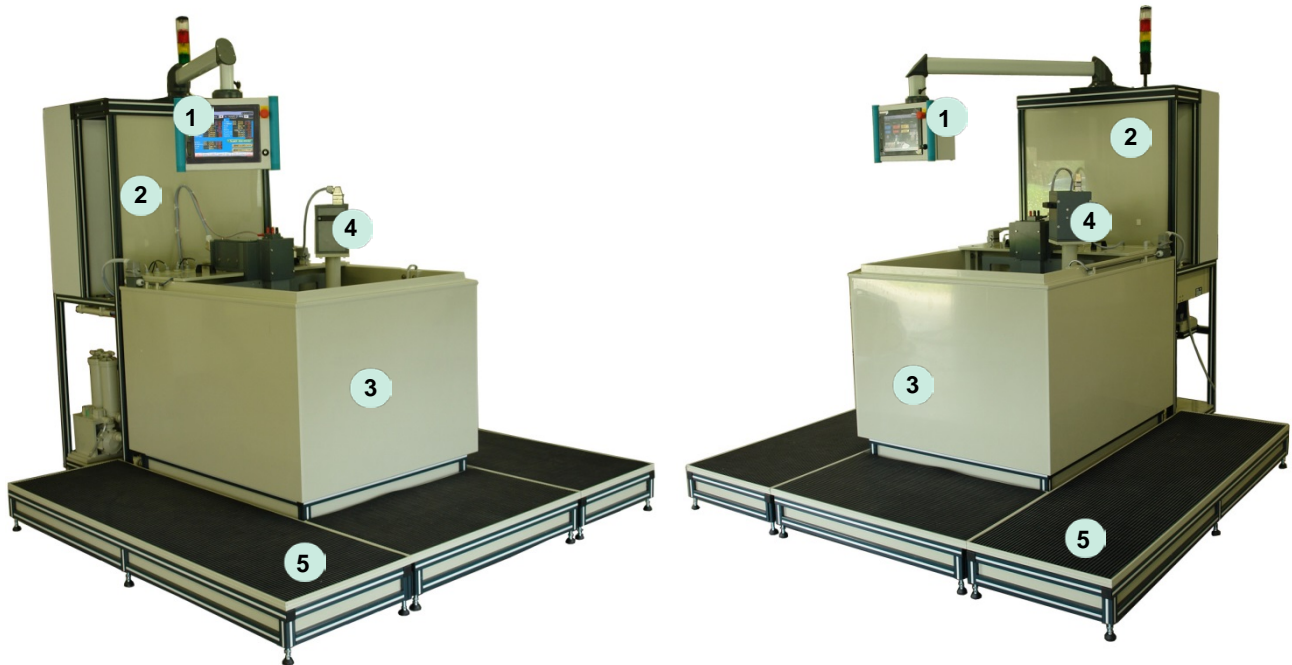
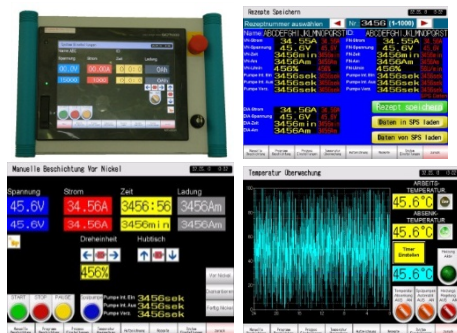


## Diamond Electro-Plating Plant DBA 1-455/013

For manufacturing of diamond band saw blades and tools with a max. insertable diameter of 600 mm with lifting/lowering and rotation installation.



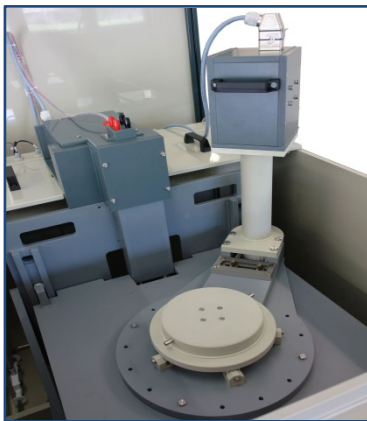
1. Touch screen operators' terminal for:
  - Bath parameters
  - Process parameters
  - Programming
  - Process control
    - \* Current
    - \* Voltage
    - \* Leak current
    - \* Timing
2. Process control and regulation unit (PRS)
  - Temperature
  - pH value
  - Level stabilisation
  - Safety sensors
  - Amin counter
3. Diamond electro-plating unit (DBE 1/100x120x80) with lifting/lowering installation
4. Horizontal rotation installation
5. Raised work platform with non-skid floor grille



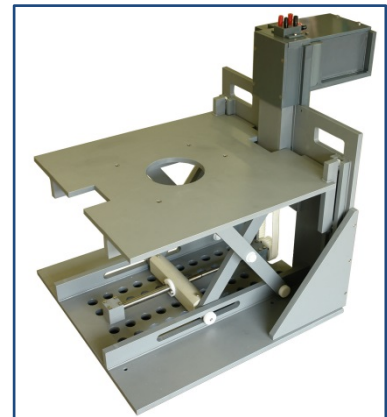
Display examples of Touch screen operators' terminal. The displays and operating functions may be individually programmed according to the customer's specifications and in various languages.



Contact and diamond electroplating fixture for band saw blades



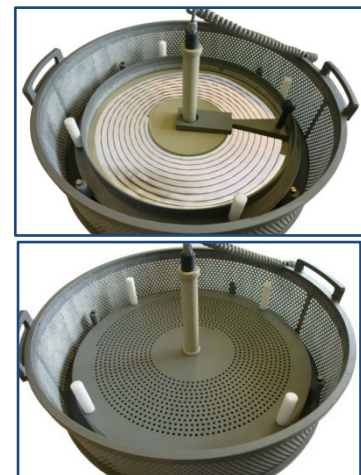
Horizontal rotation installation



Lifting/lowering installation



Electro-plating station of the DBE-1/100x120x80 with electro-plating cassette, rotation unit, lifting/lowering installation and Touchscreen operators' terminal



Contact fixture with band saw blade blank and rake to equalise the diamond grits (top) and with shielding disc (bottom)