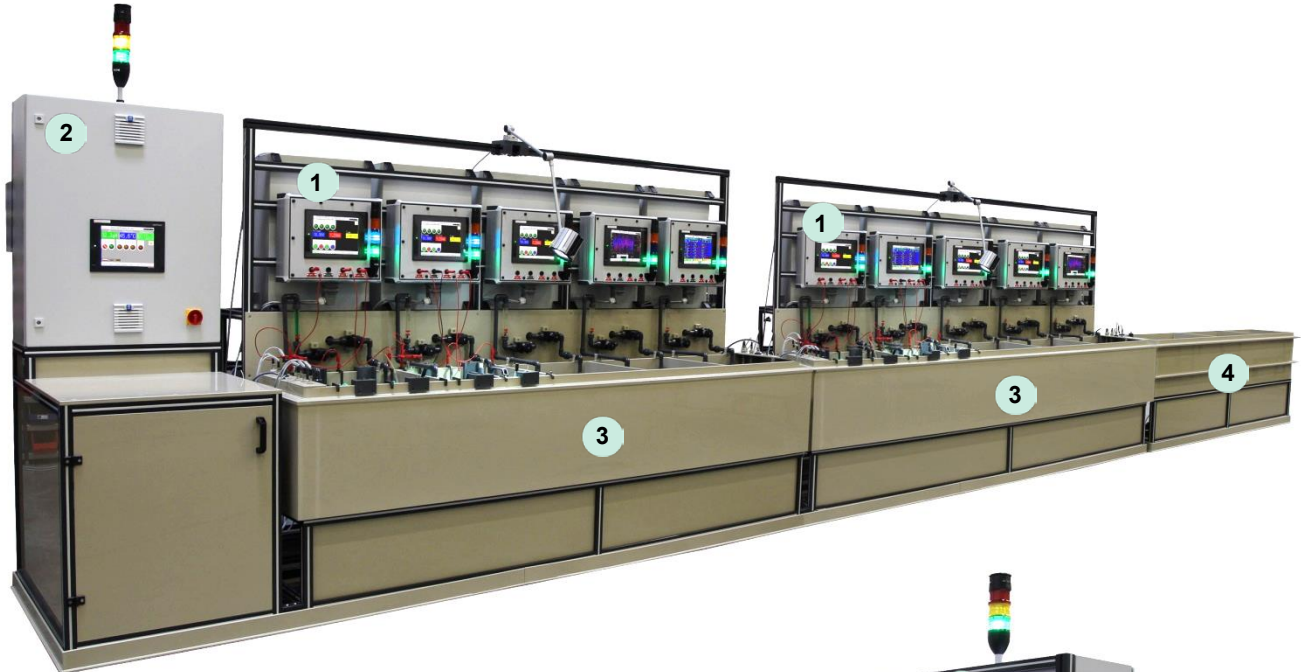


## Diamond Electro-Plating Plant DBA XX-D23

For the production of electro-plated diamond dental burrs, grinding pins, Smartphone-display cutters and grinding wheels with an outer diameter of up to 150 mm with 2 to 10 electro-plating stations.

### Front view



### Rear view

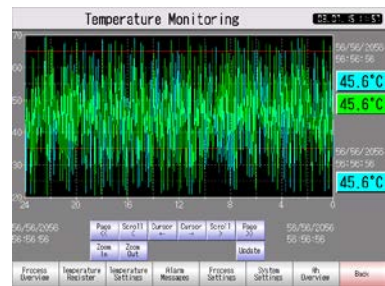
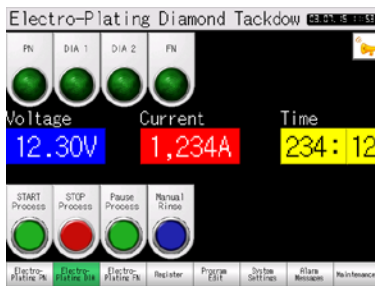


1. Diamond electro-plating control DBS XXA/45(10 pcs)
  - Current
  - Voltage
  - Leak current
  - Time count
2. Process control and regulation unit (PRS 745)
  - Temperature
  - pH
  - Level
  - Electrolyte stabilisation
  - Safety sensors
  - Amin counter
3. Diamond electro-plating unit (DBE, 2 pcs) with 5 electro-plating stations each
4. Three-cascade standing sink unit (KSP)

**Please note: All illustrations are examples. The product may differ from the illustrations. The system shown is a type DBA 10-D23 plant.**



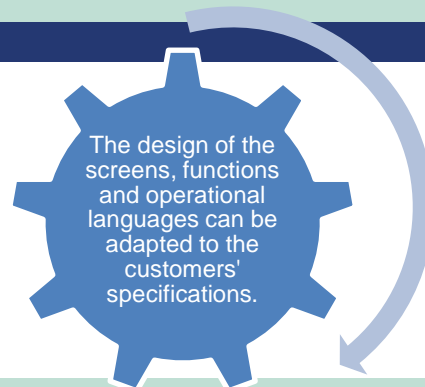
Inside view of the PRS with reservoirs for electrolyte stabilization and pH regulation, dosing pumps, circulation pump M50, filtering cartridge unit 2 x 10", flow meter and flow adjustment valve



Examples of Touch screen operator surfaces (PRS /DBS)



Adjustment and monitoring of the bath parameters by the Touch screen operators' terminal (PRS control)



3-stage automatic process-run control and preset of the electro-plating parameters by the Touch screen operators' terminal (DBS XXA-45 control).