

Rotational Reverse Plating Plant RNB 3-250/1-2-XXX



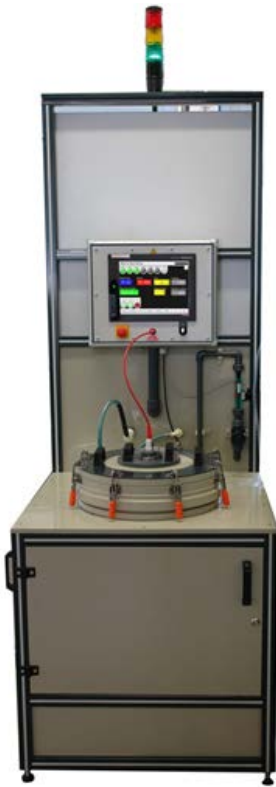
- Automatic electrolyte stabilization
- Permanent selective cleaning
- Expansion to max. 6 stations (2 rotational reverse-plating and 4 thick-nickel plating stations) possible.

1. Process control and regulation unit (PRS)
2. Rotational reverse-plating unit (RBE)
3. Thick-nickel plating unit (DVE) with 2 electro-plating stations
4. Electrolyte storage tank (EVB) for 1400 l nickel sulfamate electrolyte



Touchscreen operators' terminals for adjustment and pre-set of the bath and process parameters, process sequence control and process programming

Screen layouts, functions and operational languages to customers' specifications possible.



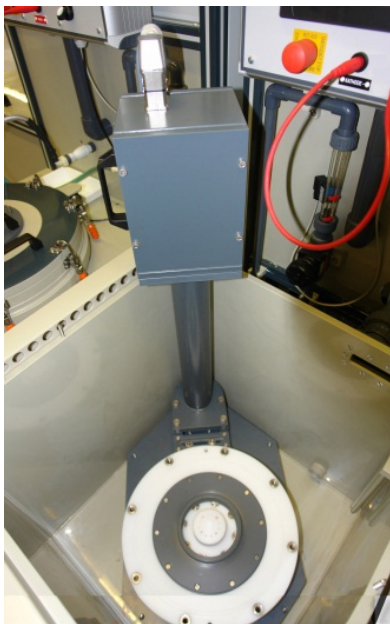
Rotational reverse-plating unit RBE 1/45-49/001

- 1 rotational plating vessel with lid
- Flow meter and diaphragm valve for electrolyte flow regulation
- Rotation max. 500 rpm
- 1 rotational reverse-plating control RBS 10A-45/001

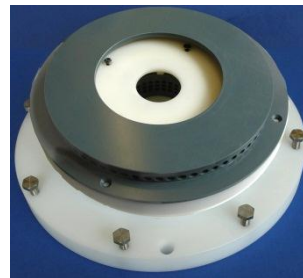


Thick-nickel plating unit DVE 2/56-56-50/001

- 2 electro-plating tanks with rim exhaustion
- 2 horizontal rotation units
- 2 thick-nickel plating controls DVS 10A-45/001 with built-in motor control



Horizontal rotation unit fitted into electro-plating tank



Rotational reverse-plating fixture containing reverse mould, mounted onto holding platter



Diamond profile dressing roller