

Pre-Treatment Plant VBA 4-453/013

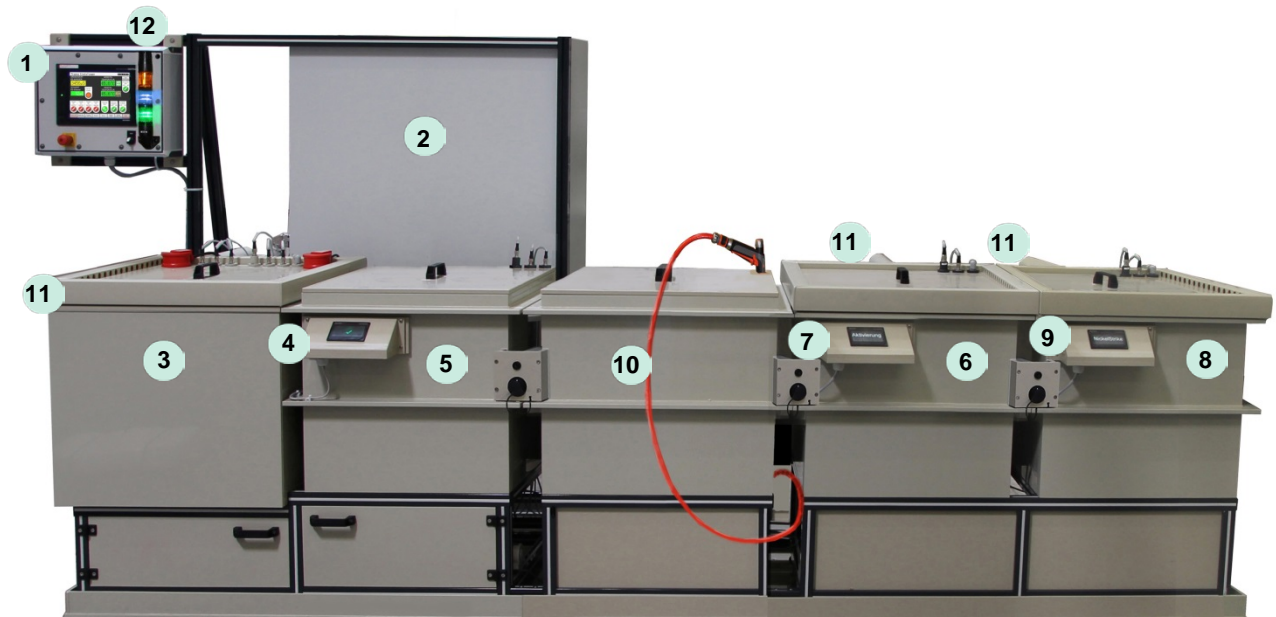
The pre-treatment plant is for cleaning and preparing the steel blanks of grinding tools for the subsequent diamond or CBN electro-plating process.

Pre-treatment comprises a warm-process bath (degreasing), 3 cold-process baths (decapation, activation and Nickelstrike) as well as a spray stream wash station.

The parts – already fitted into the corresponding contact and holding fixtures – are transported from one bath to the next in the sequence of the single process steps. Between each process step the parts are rinsed with the provided hand spray nozzle in the spray stream wash station located between the decapation and the activation baths.

Programming and pre-set of the process and bath parameters is done by means of the Touch screen operator terminal. To control the individual process steps each process bath is fitted with a corresponding control panel.

View of system



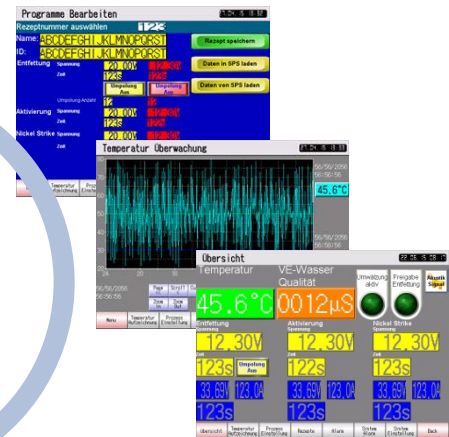
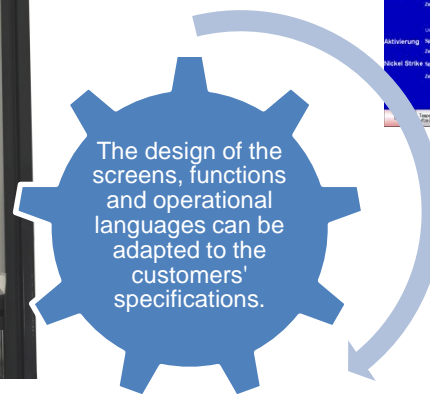
- | | |
|--|---|
| <ol style="list-style-type: none"> 1. Process-bath control PBS-845/001 including Touch screen operator terminal for process control and programming: <ul style="list-style-type: none"> - Temperature - Current - Voltage - Process time - Heating cycles 2. Electronics cabinet (Service access on rear side) | <ol style="list-style-type: none"> 3. Warm-process bath (degreasing – anodic/cathodic; polarity reversible) 4. Process control panel for degreasing 5. Cold-process bath (Decapation) 6. Cold-process bath (Activation) 7. Process control panel for activation 8. Cold-process bath (Nickelstrike) 9. Process control panel for Nickelstrike 10. Spray stream wash station with hand nozzle 11. Rim exhaustion (3 pcs) 12. Signal lamp |
|--|---|

Technical data:

- Bath volume: Process baths: appr. 180 l each; Spray stream wash station appr. 180 l
- Bath temperature: max. 80°C (degreasing bath); room temperature (all other baths)
- System dimensions (L x W x H): appr. 4107 x 790 x 1000 mm
- Power ratings. 10 KVA, 3 x 400 V, 3 x 16 A, 50 Hz
- Warm-process bath, of PP, heat insulated,
- Cold-process baths and spray stream wash station of PP
- Pipes of PP
- 1 centrifugal pump to circulate the degreasing bath
- Rim exhaustion for process baths (connection to fan, DN 160 mm)

Optional:

- Level stabilisation of process baths
- Water de-salting cartridges for autonomous deionized water supply



Pre-set and monitoring of the process and bath parameters by means of the Touch screen operator terminal (PBS-845/001 control)



Control panel for process control (Example: degreasing)

