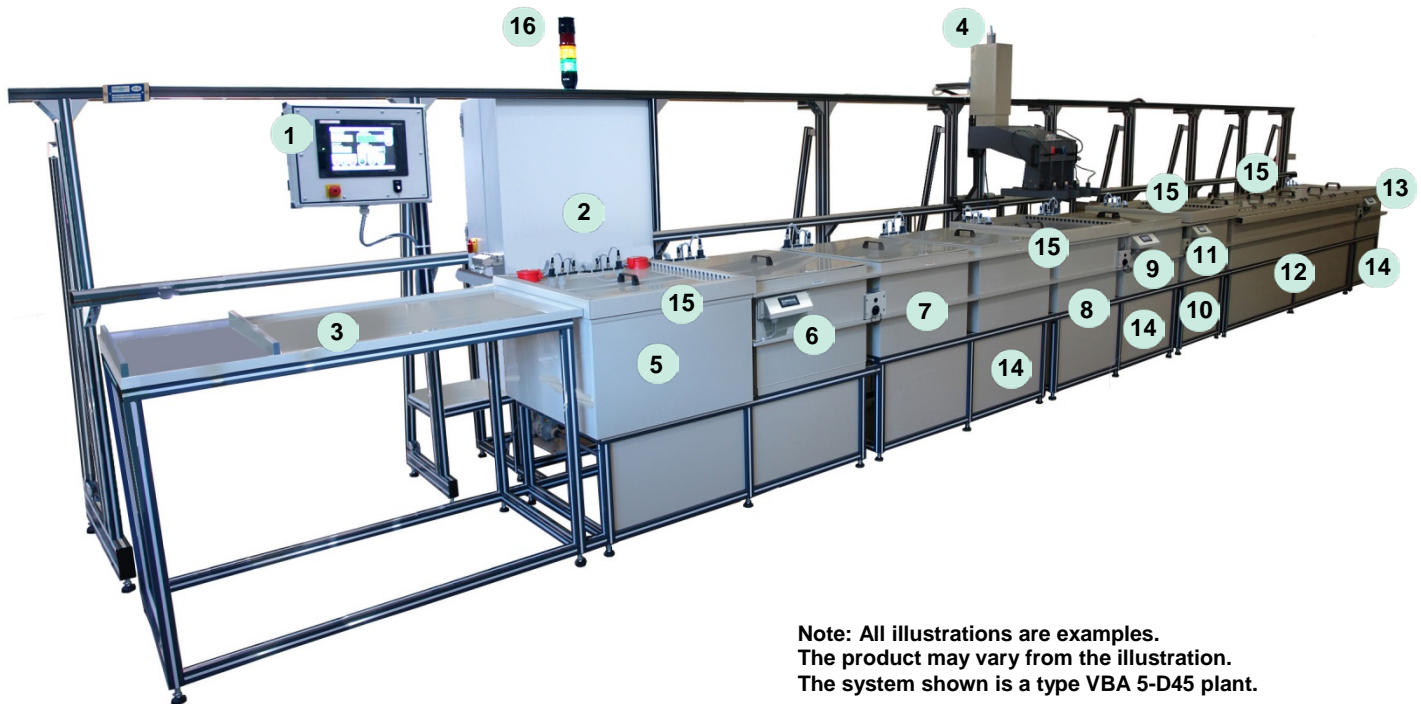


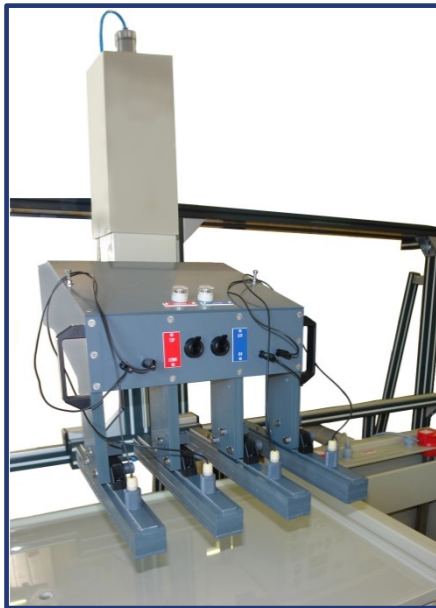
Pre-Treatment Plant VBA 5-355/455/D45

The Pre-Treatment Plant serves for cleaning and preparing the steel blanks of dental burrs, grinding pins and small tools prior to the subsequent electro-plating process. Without the appropriate pre-treatment, the parts can't be correctly electro-plated with the abrasive layer. Pre-treatment comprises 1 warm-process bath (degreasing) 3 cold-process baths (decapation, activation and Nickelstrike), an active-keeping buffer (to store the pre-treated parts which can't be immediately electro-plated) and the intermediate rinsing baths. The parts are transported – after having been mounted onto the appropriate electro-plating fixtures – from one bath to the next by means of a transport cart with a built-in lifting and lowering installation.



**Note: All illustrations are examples.
The product may vary from the illustration.
The system shown is a type VBA 5-D45 plant.**

1. Process bath control PBS-845/001
Including Touch screen operator terminal for process control and programming:
 - Temperature
 - Current
 - Voltage
 - Process time
 - Heater cycles
2. Electronics cabinet
(Service access on rear side)
3. Loading station for fixtures
4. Transport carriage for contact fixtures including lifting and lowering installation
5. Warm-process bath (Degreasing – anodic/cathodic; polarity reversible)
6. Process control panel for degreasing
7. Cold-process bath (Decapation)
8. Cold-process bath (Activation)
9. Process control panel for activation
10. Cold-process bath (Nickelstrike)
11. Process control panel for Nickelstrike
12. Cold-process bath (Active-keeping buffer)
13. Process control panel for active-keeping buffer
14. Standing sink (5 pcs)
15. Rim exhaustion (4 pcs)
16. Signal light column



Transport carriage with lifting and lowering installation with four contact fixtures in place

Technical data:

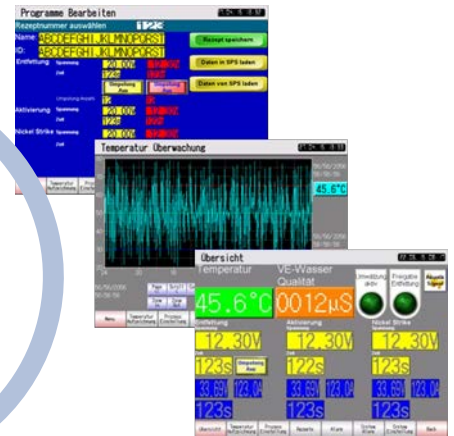
- Bath volume: Process baths: appr. 173 l each; active-keeping buffer: appr. 745 l; Standing sinks: appr. 173 l each.
- Bath temperature: max. 60°C (degreasing bath); room temperature (all other baths)
- Dimensions (L x W x H): appr. 9620 x 1320 x 3220 mm
- Power ratings: appr. 12.5 KVA, 240 V, 80 A
- 1 warm-process bath, heat insulated, of PP
- 3 cold-process baths, 4 standing sinks, 1 active-keeping buffer of PP; pipes of PP
- 1 centrifugal pump to circulate the warm-process bath
- Transport system for contact fixtures with 2 guide rails and 1 transport carriage
- Rim exhaustion for process baths (connection to fan, DN 76 mm)

Optional:

- Level stabilisation of process baths
- Flow-standing sink technology in the rinsing baths



The design of the screens, functions and operational languages can be adapted to the customers' specifications.



Pre-set and monitoring of the process and bath parameters by means of the Touch screen operator terminal (PBS-845/001 control)