

化学镀镍设备 Electroless-Nickel Plating Plant CBA 1-455/001

用来生产高精度的金刚石和立方氮化硼磨具和类似的工具，以及用于保护和装饰的镀镍，电镀工具的弥散镀。
For manufacturing high-precision diamond and CBN grinding pieces and similar tools, as well as for protective and decorative nickel plating and dispersion plating of electro-plated diamond tools.



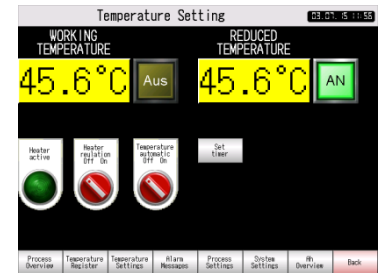
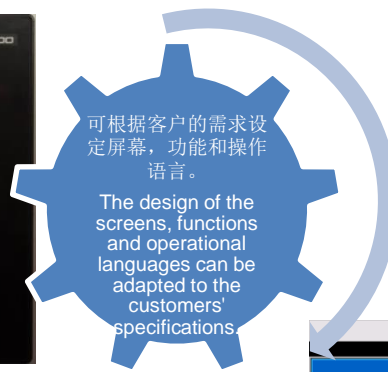
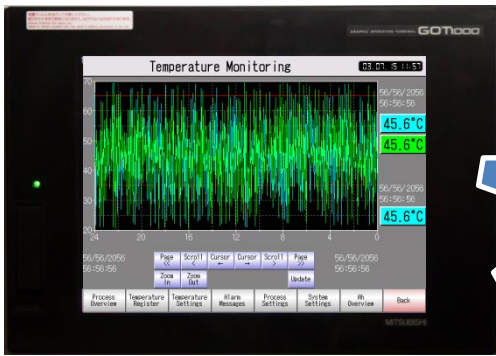
注：所有图片均为示例。实际产品可能与图片有差别。

**Please note: All illustrations are examples.
The product may differ from the illustrations.**

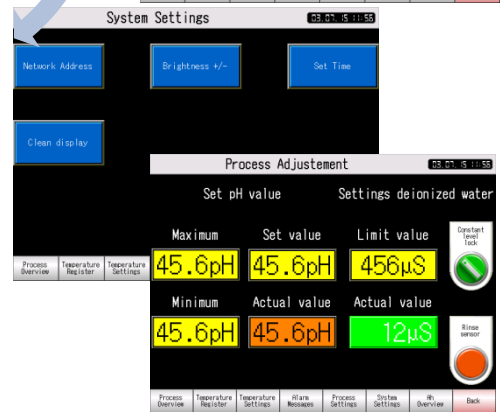


镀槽的内视图
Inside view of plating tank

1. 操作控制和调节装置
Process control and regulation unit (PRS)
 - 温度 Temperature
 - pH 调节器 regulation
 - 镍调节器 Nickel regulator
 - 4阶用时 4-stage timing
 - 槽水平面 Bath level
 - 槽参数的稳定 Stabilisation of bath parameters
 - 启动和保护电流 Starting and protection current
 - 阳极槽保护 Anodic tank protection
2. 不锈钢涂层槽 Stainless steel plating tank
 - 隔热 Heat insulated
 - 用于槽内循环的潜水离心泵
Immersed centrifugal pump for bath circulation
 - 可更换滤芯的袋式过滤装置
Filter bag unit with replaceable filter element
 - 内置的槽加热器 Built-in bath heaters
 - 内制的边缘抽吸装置
Integrated rim exhaustion
3. 三联式静态漂洗装置
Three-cascade standing sink unit (KSP)



- PRS 终端操作触摸屏
Touchscreen operator terminal of the PRS
- 操作调控 Process control
 - 设置，监视和保持操作参数的恒定 Setting, monitoring and constancy of bath parameters
 - 温度记录 Temperature register
 - 启动和保护电流的开关 Release of starting / protection current
 - 调控阳极槽保护 Control of anodic tank protection
 - 泵控制 Pump control
 - 系统设置 System settings
 - 状态报告 Status report



阳极槽保护的操作面板(Protectostat)
Operation panel for anodic tank protection (Protectostat)

用于监控和保持镀槽恒定的镍调节器
Nickel regulator for monitoring and stabilization of plating bath



PRS 内视图：计量泵和镀槽化学剂的贮池
Innr view of PRS: Dosing pumps and reservoirs for regulation chemicals for plating bath



袋式过滤装置和监测镀槽的传感器
Filter bag unit and sensors for monitoring the plating bath