

金刚石电镀设备 DBA X-355/455

Diamond electro-plating plant DBA X-355/455

用于生产被金刚石或立方氮化硼电镀的带有钢质基体的工件。

这些基体将在相应的设备中通过金刚石颗粒被电镀。所有的操作步骤（预镀镍，金刚石固定和亮镍）将在同一个电镀槽内进行。多个电镀站可以实现同时不同工件类型的加工。

该系统可根据客户需求配有最多 10 个电镀站。

操作控制和调节装置（PRS）用于保持操作参数的稳定和恒定。金刚石电镀调控器(DBS)控制和实现电镀过程。该调控器配有终端操作触摸屏，其语言和功能可根据客户需求进行设置。

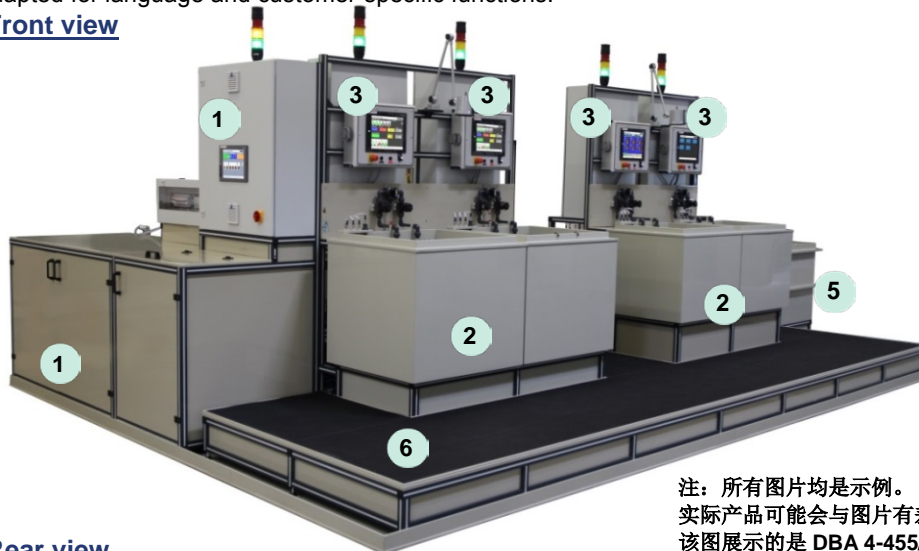
For the production of diamond or CBN electro-plated tools with steel blanks.

The blanks are electro-plated with the abrasive grits using the appropriate fixtures. All three process steps (pre-nickel, diamond tackdown and finish nickel) are carried out in the same tank. Several electro-plating stations allow for simultaneous processing of different tool types.

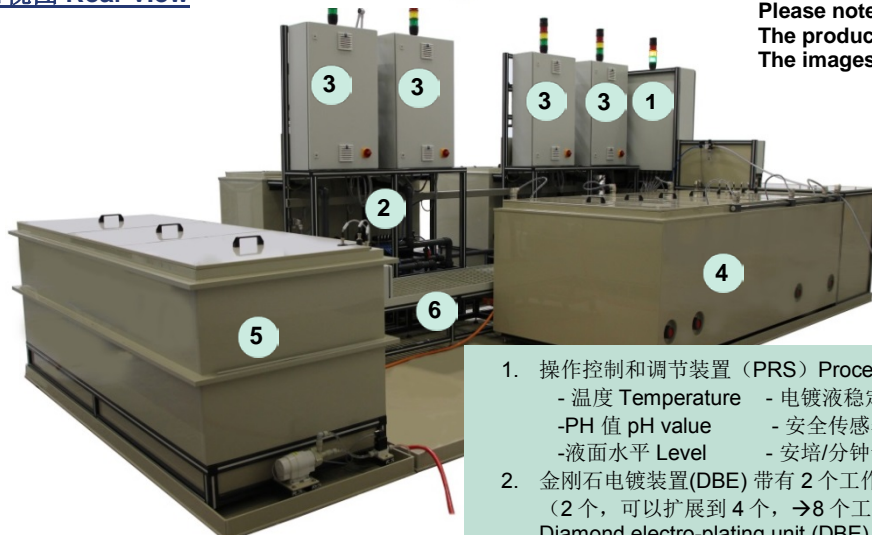
The system can comprise up to 10 electro-plating stations according to customers' specifications.

The PRS unit is for stabilisation and consistency of the process parameters. Electro-plating is carried out and monitored from the electro-plating control panels (DBS). All control panels are equipped with a Touch screen operator terminal; these can be adapted for language and customer-specific functions.

前视图 Front view



后视图 Rear view



注：所有图片均是示例。

实际产品可能会与图片有差别。

该图展示的是 DBA 4-455/002。

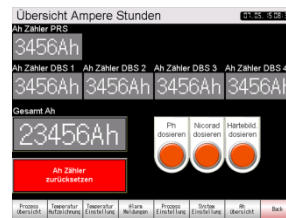
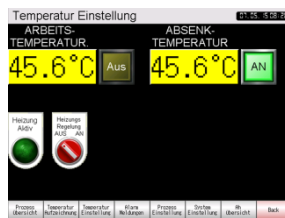
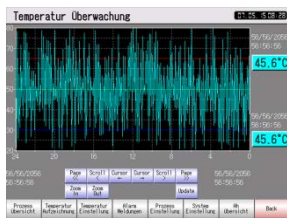
Please note: All illustrations are examples.

The product may differ from the illustrations.

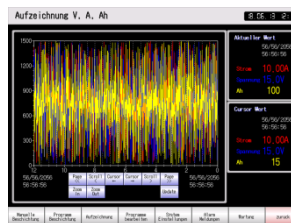
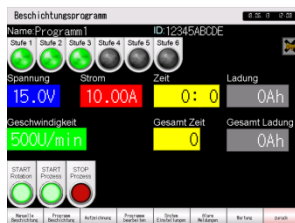
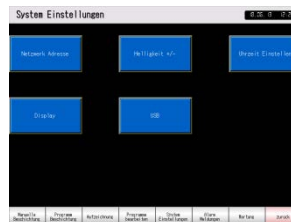
The images show a DBA 4-455/002.

1. 操作控制和调节装置（PRS） Process control and regulation unit (PRS)
 - 温度 Temperature
 - PH 值 pH value
 - 液面水平 Level
 - 电镀液稳定 Electrolyte stabilisation
 - 安全传感器 Safety sensors
 - 安培/分钟计数器 Amin counter
2. 金刚石电镀装置(DBE) 带有 2 个工作站
(2 个, 可以扩展到 4 个, →8 个工作站)
Diamond electro-plating unit (DBE) with 2 work stations
(2 pcs, can be expanded to 4 pcs, → 8 work stations)
3. 金刚石电镀调控器 DBS (4 个)
Diamond electro-plating controls DBS (4pcs)
 - 电流 Current
 - 电压 Voltage
 - 泄漏电流 Leak current
 - 用时 Time count
4. 电镀液储槽 Electrolyte storage tank (EVB)
5. 三联式静态漂洗槽（KSP） 3- cascade standing sink unit (KSP)
6. 带有防滑格栅地面的增高工作台 Raised work platform with non-skid floor grille

注：所有图片均是示例。
实际产品可能会与图片有差别。
Please note: All illustrations are examples.
The product may differ from the illustrations.



PRS 的终端操作触摸屏（电解液稳定性）
显示屏示例：槽参数，温度记录，温度设置，AH 计数器
Touchscreen operator terminal of the PRS (Electrolyte constancy)
Display examples of bath parameters, temperature recording, Temperature setting, AH-counter.



DBS 的终端操作触摸屏（操作参数，操作控制，编程）
控制和编程界面示例。
Touchscreen operator terminal of the DBS (Process parameters, process control, programming)
Display examples of control and programming screens.

技术数据 Technical data	DBA 4-455/002 (示例 example)
槽容量 Bath capacity:	电镀液储存槽: 大约 2352 升, 电镀槽: 每个大约 293 升 Electrolyte storage tank: approx. 2352 l; electro-plating tanks: approx. 293 l each
槽温度 Bath temperature:	最高 60 摄氏度 max. 60°C
规格 (长 x 宽 x 高) Dimensions (L x W x H):	大约 7037 x 4064 x 2441 毫米 approx. 7037 x 4064 x 2441 mm
电流接入值: Power ratings:	大约 13,0 千伏安, 400 伏, 32 安, 50 赫兹 approx. 13,0 KVA, 400 V, 32 A, 50 Hz
接入周边抽吸装置 Connection for rim exhaustion:	公称直径 75 毫米 DN 75 mm (可选 optional)
- 电镀液储存槽 (EVB), 隔热, 聚丙烯材质 Electrolyte storage tank (EVB), heat insulated, of PP	
- 自动电镀稳定和干燥保护 Automatic electrolyte stabilisation and dry-run protection	
- 4 个隔热电镀槽和聚丙烯管道, 可以扩展到 8 个电镀槽 4 heat insulated electro-plating tanks and pipes of PP; system can be expanded to 8 electro-plating tanks	
- 槽参数和操作控制的终端操作触摸屏 Touchscreen operator terminals for bath parameters and process control	
- 1 个离心泵 M100; 4 个冲洗泵 M25, 3 个添加剂计量泵 1 circulation pump M100; 4 rinsing pumps M25, 3 dosing pumps for additives	