

旋转式凹版电镀设备 RNB 3-250/1-2-XXX

Rotational Reverse Plating Plant RNB 3-250/1-2-XXX



- 自动保持电解液稳定
Automatic electrolyte stabilization
- 永久选择性清理
Permanent selective cleaning
- 可最多扩展到 6 个工作站
(2 个旋转电镀站和 4 个镀厚镍工作站)
Expansion to max. 6 stations
(2 rotational reverse-plating and
4 thick-nickel plating stations) possible.

1. 操作控制和调节装置(PRS)
Process control and regulation unit (PRS)
2. 旋转式凹版电镀装置(RBE)
Rotational reverse-plating unit (RBE)
3. 镀厚镍装置(DVE), 带有 2 个电镀站
Thick-nickel plating unit (DVE) with 2 electro-plating
stations
4. 1400L 氨基磺酸镍电镀液的储存池(EVB)
Electrolyte storage tank (EVB) for 1400 l nickel sulfamate
electrolyte



可根据客户需求设置屏幕, 功能和操作语言。
Screen layouts,
functions and
operational languages to
customers'
specifications possible.

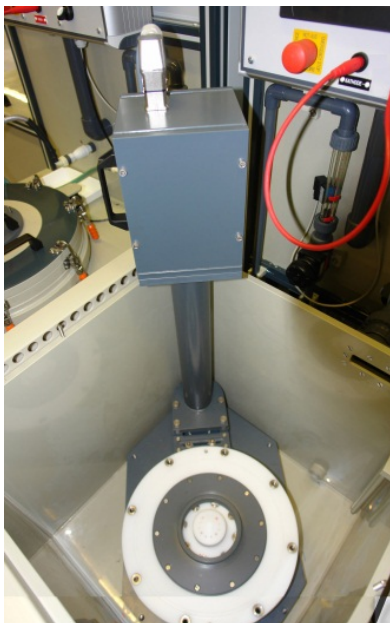
用于设置和预设槽及操作参数, 操作过程, 操作编程的终端操作触摸屏
Touchscreen operators' terminals for adjustment and pre-set of the bath and
process parameters, process sequence control and process programming



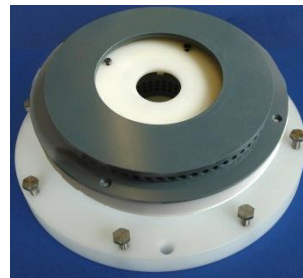
旋转式凹版电镀装置 RBE 1/45-49/001
Rotational reverse-plating unit RBE 1/45-49/001
- 一个带有盖子的旋转电镀容器
1 rotational plating vessel with lid
- 带有膜片阀的流量计，用于调节电解液流量
Flow meter and diaphragm valve for electrolyte flow regulation
- 旋转 最大 500 转每分 Rotation max. 500 rpm
- 旋转式凹版电镀调控装置 RBS 10A-45/0011
rotational reverse-plating control RBS 10A-45/001



镀厚镍装置 DVE 2/56-56-50/001
Thick-nickel plating unit DVE 2/56-56-50/001
- 2 个带有周边抽吸装置的电镀槽
2 electro-plating tanks with rim exhaustion
- 2 个水平旋转装置 2 horizontal rotation units
- 2 个镀厚镍调控装置 DVS 10A-45/001
2 thick-nickel plating controls
带有内置驱动调控装置 with built-in motor control



置于电镀槽中的水平旋转装置
Horizontal rotation unit fitted into electro-plating tank



旋转电镀装置带有凹模，安装在模具托盘上
Rotational reverse-plating fixture containing reverse mould, mounted onto holding platter



电镀金刚石成型滚修整轮
Diamond profile dressing roller